

(12) INTERNATIONAL APPLICATION PUBLISHED UNDER THE PATENT COOPERATION TREATY (PCT)

(19) World Intellectual Property Organization  
International Bureau



(43) International Publication Date  
24 July 2003 (24.07.2003)

PCT

(10) International Publication Number  
WO 03/061245 A1

- (51) International Patent Classification<sup>7</sup>: H04L 29/06, G06F 17/60
- (21) International Application Number: PCT/US03/00169
- (22) International Filing Date: 3 January 2003 (03.01.2003)
- (25) Filing Language: English
- (26) Publication Language: English
- (30) Priority Data:  
10/043,918 11 January 2002 (11.01.2002) US
- (71) Applicant: INTEL CORPORATION [US/US]; 2200 Mission College Boulevard, Santa Clara, CA 95052 (US).
- (72) Inventor: PENDAKUR, Ramesh; 19766 NW Phillips Road, Hillsboro, OR 97124 (US).
- (74) Agents: MALLIE, Michael, J. et al.; Blakely, Sokoloff, Taylor & Zafman, 7th Floor, 12400 Wilshire Boulevard, Los Angeles, CA 90025 (US).
- (81) Designated States (*national*): AE, AG, AL, AM, AT, AU, AZ, BA, BB, BG, BR, BY, BZ, CA, CH, CN, CO, CR, CU, CZ, DE, DK, DM, DZ, EC, EE, ES, FI, GB, GD, GE, GH, GM, HR, HU, ID, IL, IN, IS, JP, KE, KG, KP, KR, KZ, LC, LK, LR, LS, LT, LU, LV, MA, MD, MG, MK, MN, MW, MX, MZ, NO, NZ, OM, PH, PL, PT, RO, RU, SD, SE, SG, SK, SL, TJ, TM, TN, TR, TT, TZ, UA, UG, UZ, VN, YU, ZA, ZM, ZW.
- (84) Designated States (*regional*): ARIPO patent (GH, GM, KE, LS, MW, MZ, SD, SL, SZ, TZ, UG, ZM, ZW), Eurasian patent (AM, AZ, BY, KG, KZ, MD, RU, TJ, TM), European patent (AT, BE, BG, CH, CY, CZ, DE, DK, EE, ES, FI, FR, GB, GR, HU, IE, IT, LU, MC, NL, PT, SE, SI, SK, TR), OAPI patent (BF, BJ, CF, CG, CI, CM, GA, GN, GQ, GW, ML, MR, NE, SN, TD, TG).

**Published:**

- with international search report
- before the expiration of the time limit for amending the claims and to be republished in the event of receipt of amendments

For two-letter codes and other abbreviations, refer to the "Guidance Notes on Codes and Abbreviations" appearing at the beginning of each regular issue of the PCT Gazette.



WO 03/061245 A1

(54) Title: CONTENT-BASED CACHING AND ROUTING OF CONTENT USING SUBSCRIPTION INFORMATION

(57) Abstract: A system, apparatus, and method are provided for providing personalized content delivery using a content-based scheme based on user profiles comprising content subscription information. According to one embodiment of the present invention, a user may provide content subscription information via a corresponding network node. A user profile corresponding to the user may be generated using the content subscription information. The content based on the user profile may then be delivered to the user via the corresponding network node.

BEST AVAILABLE COPY

## CONTENT-BASED CACHING AND ROUTING OF CONTENT USING SUBSCRIPTION INFORMATION FROM DOWNSTREAM NODES

5

### COPYRIGHT NOTICE

Contained herein is material that is subject to copyright protection. The copyright owner has no objection to the facsimile reproduction of the patent disclosure by any person, as it appears in the Patent and Trademark Office patent files or records, but otherwise reserves all rights to the copyright whatsoever.

10

### FIELD OF THE INVENTION

This invention relates to content delivery, in general, and more specifically to delivering personalized content along network nodes using a content-based scheme.

15

### BACKGROUND OF THE INVENTION

The idea of delivering content is nothing new. Many attempts have been made to personalize content delivery by providing users access to content of their choice and needs. Typically, users have access to various databases, such as news articles, sports statistics, and stock quotes. The users may access such information in plain text format and/or access the information by playing audio and/or video clips. Further, the users have the option of subscribing to databases from content providers, or downloading such databases on their own devices, such as computers and handheld devices.

20

The broadcast content-delivery methods and apparatus available today are address-based, and therefore, rely on end-user devices, such as set-top boxes to actively access the available information, and sort out the relevant information. Such method and apparatus are very inefficient, because, they require information to be available even when not needed, and therefore waste bandwidth. Further, the users are required to choose from a practically unlimited supply of unstructured information, and repeat the process every time the users' interests change.

25

Further, due to the address-based nature of today's content-delivery methods and apparatus, they merely compress and bundle the information files without much-needed categorization of information. Lack of categorization is one reason why content-delivery cannot be personalized. Further, the lack of categorization makes it extremely difficult

30

and inefficient for users or administrators to search the content. Hence, with today's increasing demand for information, the address-based content delivery methods and apparatus are uneconomical and inefficient.

5

### BRIEF DESCRIPTION OF THE DRAWINGS

The appended claims set forth the features of the invention with particularity. The invention, together with its advantages, may be best understood from the following detailed description taken in conjunction with the accompanying drawings of which:

10 Figure 1 is a block diagram of a typical computer system upon which one embodiment of the present invention may be implemented;

Figure 2 is a block diagram illustrating an exemplary hierarchical content distribution network in which the present invention may be implemented;

15 Figure 3 is a block diagram conceptually illustrating an overview of delivering content from a content delivery system to a content receiving system, according to one embodiment of the present invention;

Figure 4 is a flow diagram conceptually illustrating content delivery, according to one embodiment of the present invention;

20 Figure 5 is a block diagram conceptually illustrating content delivery in a hierarchy of network nodes using a content-based caching and forwarding scheme, according to one embodiment of the present invention;

Figure 6 is a flow diagram conceptually illustrating content delivery processing, according to one embodiment of the present invention;

25 Figure 7 is a block diagram conceptually illustrating a cable television network using content-based scheme for content delivery, according to one embodiment of the present invention.

### DETAILED DESCRIPTION

30 A method and apparatus are described for delivering content throughout a hierarchy of network nodes using a content-based caching and routing scheme, which relies upon subscription information from downstream nodes. Broadly stated, embodiments of the present invention allow scheduling and distribution of personalized

content by generating and distributing a content-based bit stream appropriate for the particular sub-tree of the distribution network.

5 A system, apparatus, and method are provided for providing personalized content delivery using a content-based scheme based on user profiles comprising content subscription information. According to one embodiment of the present invention, a user may provide content subscription information via a corresponding network node. A user profile corresponding to the user may be generated using the content subscription information. The content based on the user profile may then be delivered to the user via the corresponding network node.

10 According to one embodiment, a metadata dictionary of content descriptors may be periodically provided to all the network nodes in the hierarchy for uniformity and consistency in (metadata) vocabulary. The content descriptors may be associated with content to generate descriptive content. The descriptive content may then be cached and routed according to user subscriptions.

15 According to one embodiment, a content bit stream based on aggregated subscription information may be generated and delivered to a hierarchy of network nodes. The content bit stream may then be filtered at various levels of the hierarchy to provide content to the users based on their corresponding content subscriptions, as identified by their user profiles, for example.

20 In the following description, for the purposes of explanation, numerous specific details are set forth in order to provide a thorough understanding of the present invention. It will be apparent, however, to one skilled in the art that the present invention may be practiced without some of these specific details. In other instances, well-known structures and devices are shown in block diagram form.

25 The present invention includes various steps, which will be described below. The steps of the present invention may be performed by hardware components or may be embodied in machine-executable instructions, which may be used to cause a general-purpose or special-purpose processor or logic circuits programmed with the instructions to perform the steps. Alternatively, the steps may be performed by a combination of  
30 hardware and software.

The present invention may be provided as a computer program product, which may include a machine-readable medium having stored thereon instructions, which may be used to program a computer (or other electronic devices) to perform a process according to

the present invention. The machine-readable medium may include, but is not limited to, floppy diskettes, optical disks, CD-ROMs, and magneto-optical disks, ROMs, RAMs, EPROMs, EEPROMs, magnetic or optical cards, flash memory, or other type of media / machine-readable medium suitable for storing electronic instructions. Moreover, the  
5 present invention may also be downloaded as a computer program product, wherein the program may be transferred from a remote computer to a requesting computer by way of data signals embodied in a carrier wave or other propagation medium via a communication link (e.g., a modem or network connection).

Importantly, while embodiments of the present invention will be described with  
10 reference to viewers and streaming video, the apparatus and methods described herein are equally applicable to various other types of media and multimedia. For example, viewers and/or listeners may receive steaming audio and video, streaming audio, text, graphics, animation, data, and the like.

**Figure 1** is a block diagram of a typical computer system upon which one  
15 embodiment of the present invention may be implemented. Computer system 100 comprises a bus or other communication means 101 for communicating information, and a processing means such as processor 102 coupled with bus 101 for processing information. Computer system 100 further comprises a random access memory (RAM) or other dynamic storage device 104 (referred to as main memory), coupled to bus 101 for storing information  
20 and instructions to be executed by processor 102. Main memory 104 also may be used for storing temporary variables or other intermediate information during execution of instructions by processor 102. Computer system 100 also comprises a read only memory (ROM) and/or other static storage device 106 coupled to bus 101 for storing static information and instructions for processor 102.

25 A data storage device 107 such as a magnetic disk or optical disc and its corresponding drive may also be coupled to computer system 100 for storing information and instructions. Computer system 100 can also be coupled via bus 101 to a display device 121, such as a cathode ray tube (CRT) or Liquid Crystal Display (LCD), for displaying information to an end user. Typically, an alphanumeric input device 122, including  
30 alphanumeric and other keys, may be coupled to bus 101 for communicating information and/or command selections to processor 102. Another type of user input device is cursor control 123, such as a mouse, a trackball, or cursor direction keys for communicating direction information and command selections to processor 102 and for controlling cursor

movement on display 121.

A communication device 125 is also coupled to bus 101. The communication device 125 may include a modem, a network interface card, or other well-known interface devices, such as those used for coupling to Ethernet, token ring, or other types of physical attachment for purposes of providing a communication link to support a local or wide area network, for example. In this manner, the computer system 100 may be coupled to a number of clients and/or servers via a conventional network infrastructure, such as a company's Intranet and/or the Internet, for example.

It is appreciated that a lesser or more equipped computer system than the example described above may be desirable for certain implementations. Therefore, the configuration of computer system 100 will vary from implementation to implementation depending upon numerous factors, such as price constraints, performance requirements, technological improvements, and/or other circumstances.

It should be noted that, while the steps described herein may be performed under the control of a programmed processor, such as processor 102, in alternative embodiments, the steps may be fully or partially implemented by any programmable or hard-coded logic, such as Field Programmable Gate Arrays (FPGAs), TTL logic, or Application Specific Integrated Circuits (ASICs), for example. Additionally, the method of the present invention may be performed by any combination of programmed general-purpose computer components and/or custom hardware components. Therefore, nothing disclosed herein should be construed as limiting the present invention to a particular embodiment wherein the recited steps are performed by a specific combination of hardware components.

**Figure 2** is a block diagram conceptually illustrating an exemplary hierarchical content distribution network in which the present invention may be implemented. Many types of networks and protocols are available, and may be used. However, for illustrative purposes only, fiber optics may be used downstream up to content caching and routing systems 240-250, and then twisted pairs or coaxial cables may be used down to the content receiving systems 255-295.

Connected to this network 200 is are content sources 240, content delivery system 230 (delivery system), content caching and routing systems (caching and routing systems) 240-50, and content receiving systems (receiving system) 255-295. The number and arrangement of this equipment may vary depending on the application.

The content sources 240 may include the sources that provide the content to be delivered by the delivery system 230. The delivery system 230 may deliver content to other systems, subsystems, or nodes connected to the network 200. The caching and routing systems 240-50 may receive the content from the delivery system 230. The content is then cached and filtered on to the receiving systems 255-295. The receiving systems 255-295 ultimately receive the content delivered by the delivery system 230, and may also provide the content to the end-users. The delivery and receiving systems may have several modules coupled to one another. A software module may be coupled to another module to receive variables, parameters, arguments, pointers, etc. and/or to generate or pass results, updated variables, pointers etc. A software module may also be a software driver to interface with the operating system running on the platform. Further, a software module may be a hardware driver to configure, setup, initialize, send and receive data to and from a hardware device.

The network 200 may provide interconnections to the delivery system 230, the receiving systems 255-295, and other nodes and/or systems. The network 200 may correspond to any topologies and protocols. Some of the examples are the Internet, Local Area Network (LAN), Wide Area Network (WAN), broadcast network, etc. The transmission medium may be any suitable communication medium, such as air, cable, electromagnetic, optic, etc.

Figure 3 is a block diagram conceptually illustrating an overview of delivering content from a content delivery system (delivery system) to a content receiving system (receiving system), according to one embodiment of the present invention. As illustrated, the network 300 comprises a delivery system 305 and a receiving system 310. The delivery system 305 may be a website, a content provider (such as a cable operator/provider, a television/radio network, a satellite service provider), an internet service provider (ISP), or any system that downloads, personalizes, packages, delivers or broadcasts content to other systems and/or nodes. The delivery system 305 may comprise one or more servers, computer systems, or platforms with appropriate hardware and software to generate and prepare the content to be delivered.

According to one embodiment, the delivery system 305 may include a descriptive content generator 315. The descriptive content generator 315 generates and/or packages the descriptive content by associating metadata vocabulary or content descriptors with the content. The content descriptors or vocabulary are obtained from a metadata dictionary,

which, according to one embodiment, may be included in the delivery system 305. The delivery system 305 may comprise a content preparation module 335 for preparing a content bit stream based on aggregated subscription information from content receiving systems 310. The delivery system 305 may also include a content distributor 320 for  
5 distributing the content bit stream to appropriate filtering hubs 325 for further filtering, pruning, and forwarding. According to one embodiment, the content distributor 320 may include the content preparation module 335. The filtering hubs 325 knowing the individual users' profiles prune and filter the content stream into appropriate content streams before downstreaming the content streams to the receiving system 310.

10 The receiving system 310 may receive the content streams delivered by the delivery system. The receiving system 310 may be similar to the delivery system 305 and may include a server, a computer system, and a platform. The receiving system 310 may include content receivers (receivers) 330 to perform the receiving function. The receiving system 310 may also include a content presentation subsystem 340 to present the content  
15 to the users via an interface to the users, so that the users may access the corresponding content streams efficiently and intelligently. The interface may comprise a multimedia device, such as a television, a computer, a handheld device, or any other system that may receive, provide and/or display the content. The receiving system 310 may comprise an antenna (e.g., rabbit ears, satellite dish, etc.). The receiving system 310 may have  
20 different levels of intelligence, as desired, such as intelligence to know how to connect and receive the content (e.g., tune to a particular channel to receive a corresponding predetermined broadcast transmission) and to have the intelligence to receive and use a schedule of broadcast (e.g., to use a conceptual TV guide of sorts).

Figure 4 is a flow diagram conceptually illustrating content delivery, according to  
25 one embodiment of the present invention. First, a descriptive content generator may associate content descriptors with the content for generating and/or packaging descriptive content in processing block 405. According to one embodiment, the descriptive content generator may receive the content from various content sources. Using the descriptive content, a content bit stream may then be prepared based on a collective subscription  
30 information by a content preparation module in processing block 410. The collective subscription information may include content preferences and content ratings as provided by users on a collective basis. Such collective subscription information may serve as a much more accurate way of determining popularity of a program, in comparison to relying



on a general survey, such as Neilson Rating.

The content bit stream may then be distributed by a content distributor to the respective filtering hubs in processing block 415. The filtering hubs may then compare the content in the content bit stream with each of the user profiles for determining the relevance of the data. Such comparison may include filtering and pruning of the content bit stream into personalized content streams corresponding to each of the user profiles in processing block 420. The personalized content streams are then delivered by the filtering hubs to various content receivers of the content receiving system in processing block 425. The content presentation subsystems may then provide the personalized content streams to each of the corresponding user.

Figure 5 is a block diagram conceptually illustrating content delivery in a hierarchy of network nodes using a content-based caching and forwarding scheme, according to one embodiment of the present invention. As illustrated, the network 500 comprises a content distributor 505 for distributing the content, filtering hubs 530-35 for caching and filtering the content, and receivers 540-50 for receiving the content.

According to one embodiment, the content distributor 505 may comprise any system or type of content provider, such as a television/radio network, e.g., ABC or NBC, which may transmit content bit stream to various local broadcasters, such as KABC or KNBC, serving as network nodes, such as the filtering hubs 530-35. The content distributor 505 may be a satellite service provider, such as Dish Network or DirecTV, for distributing the content along the network 500 via a satellite system. Further, the content distributor may include a cable provider or Multiple System Operator (MSO) for distributing the content to various network nodes in a cable network. Any combination of content distributors is contemplated. The content distributor 505 may include an Internet Service Provider (ISP), or any other system or provider that downloads the content, prepares and/or packages the content, and delivers and/or broadcasts the content.

According to one embodiment, the content distributor 505 may have access to a metadata dictionary 510 comprising metadata vocabulary (vocabulary) or content descriptors (descriptors). The metadata dictionary 510 may comprise common vocabulary so that it may be understood throughout the network 500. The vocabulary 510 may include terms, phrases, or descriptive paragraphs for describing content. Further, the metadata dictionary 510 may be periodically updated, whenever necessary, with new and/or amended vocabulary. The content distributor 505 may provide the most recent

version of the metadata dictionary 510 to all the network nodes, including the filtering hubs 530-35 and receivers 540-550. This may create and sustain uniformity and common understanding of the vocabulary 510, so that the (descriptive) content, subscription information, and user profiles may be fully and correctly understood by all the nodes in  
5 the network 500.

Metadata vocabulary or content descriptors may comprise content or media descriptor tags that may characterize a logical grouping of content, also known as packages, so that the content may be used efficiently and intelligently within a given network. A package may include elements or content, such as HyperText Markup  
10 Language (HTML) pages, MP3 files, QuickTime movies, video clips, audio clips, and any other suitable content. The package may be independent of the network 500 and transmission mechanism and policies. Further, the package may be represented with a unique identifier and markup language data.

According to one embodiment, the vocabulary or descriptors 510 may be  
15 associated with the content thereby attaching description to the content, and therefore, generating and/or packaging descriptive content. A descriptive content generator 575 may attach descriptors 510 to the content, received from a content source 520, for providing attributes and characteristics, such as, but not limited to, type of the content, relevance of the content, content transmission time, the method of transmission. Typically, the  
20 descriptors 510 will be separate from the actual portion of the content that is being distributed, although other embodiments are contemplated, such as those where the descriptive content is sampled, from within the presented content. For example, the descriptive content may indicate content type (e.g., movie, sitcom, mini-series, news, music, sports), content category (e.g., baseball, comedy, action, science fiction, horror,  
25 jazz, blues), content subject matter (e.g., Los Angeles Dodgers, economics, politics, travel), and other information.

According to one embodiment, the content source 520 is linked with the content distributor 505. The content source 520 may include various content sources that provide the content to be distributed by the content distributor 505. The content sources 520 may  
30 include any type of content source that can provide content, such as websites, multimedia devices, television/radio networks, cable operators/providers, and satellite server providers. The content received from content sources 520 may, therefore, include, web content, re-purposed web content, produced content, and external content. For example,

the web content may include websites and files retrieved from a website; the re-purposed content may include previously retrieved websites and files; the produced content may include content that has been created, generated, composed, or produced for delivery; and, the external content may include any other external content produced and/or stored  
5 elsewhere.

According to one embodiment, the content may be of any form desired for a particular implementation, and is to be interpreted broadly. For example, the content may be computer software, multimedia content, e.g., various types of programs, movies, videos, videos on demand, video games, audio, MP3 audio, and other types of content,  
10 such as structured data. The content may have a digital format, and digital processing may be used on the content including storage, electronic manipulation, perfect copying, compression, transmission, and others. For example, an identical copy of the digital content may be created and a bit-wise comparison of the original and the copy may be used to verify that the two are identical.

15 The content may be in an electronically accessible format. Typically, the content may exist as a computer file having a particular file format that is compatible, standard, or efficient for the type of content and will be stored in a memory. For example, in case of an audio content, the file format may be an MP3 format, and the content may be stored in a memory representing an audio library. However, other embodiments are contemplated.  
20 For example, according to one embodiment, the digital content may exist as a stream of digital data. The stream of digital data may be provided by a digital data generating source or device (e.g., a digital camera/recorder), may be provided by an electronically connected source or provider (e.g., a news feed or a stock ticker), or may be provided by another functionally connected entity.

25 According to one embodiment, the content distributor 505 may have access to or may include or may be coupled to a content storage 515 and a subscription information storage 525. The content storage 515 may contain and store (a master copy of) all the content received from the content sources 520, and at various levels within the network 500. The content distributor 505 may access the content storage 515 for accessing any  
30 piece of content at any time. The content distributor 505 may also periodically, or when necessary, receive the content from the content sources 520. Further, all the subscription information received from the users 560-70 may be contained and stored in the subscription information storage 525. As with the content, the content distributor 505 may

also access all the subscription information provided by the users, and received/collected by and within the network 500. According to one embodiment, the subscription information may include users' 560-70 requests for certain content, their interest-level in relations to the requested content, date and/or time for receiving such and other content, and channel information. The subscription information may also include the users' 560-70 demographic information, geographic information, and other related, needed, and suitable information.

The filtering hubs 530-535 may aggregate the individual subscription information received from downstream network nodes and present them as subscriptions to upstream nodes until the content distributor 505 is reached. According to one embodiment, the content distributor 505 may also include or be coupled to a content preparation module 580 for preparing an aggregated content bit stream based on the collective subscription information. The content preparation module 580 may match the content and the collective subscription information to form an aggregated content bit stream for all the network nodes. By relying on the subscription information, or in other words, by using a content-based scheme, the available bandwidth may be maximized. Subscription information may serve as a more accurate form of a rating survey, such as Nielson Rating, which indicates the users' 530-570 interest-level. The available bandwidth may be allocated to various content based on the users' 530-570 interest-level in content.

According to one embodiment, the users 560-70, including viewers and/or listeners, may provide subscription information by accessing their respective receivers 540-550. For example, a user 560-70 may access his/her receiver via a remote control and/or keyboard, or via any other device and/or voice/action sensor, to provide the subscription information. According to one embodiment of the present invention, a user 560-70 may be of any form of user desired for a particular implementation, and is to be interpreted broadly. For example, a user may be an individual in a household, an individual set-top box may represent a user, a community of users based on households, head-ends, cable systems, zip codes, or other geographic locations, and users 560-70 may choose to join a community because of the content they may receive.

According to one embodiment, a receiver 540-50 may be part of a content receiving system (receiving system) to receive the content, and may serve as a network node. Depending on a particular implementation, according to one embodiment, the receiver 540-50 may not include content presentation capability or a content providing

sub-system (e.g., a digital television) for presenting the (digital) content in a human consumable format (e.g., video presented on a display device). The receiving system, in such a case, may present the content to a separate content presentation system in a form that is functionally, electrically, and/or physically coupled with the receiving system that presents the content to the users 560-70. Alternatively, the receiver 540-50 may include content presentation capability to directly present the content to the users 575. For example, the receiver 540-50 may include a digital television, a personal video recorder, a stereo, an MP3 player, a CD ROM burner, or any other content presentation/providing sub-system.

Typically, the receiver 540-50 may include a conventional component, such as a set-top box or television. After proper installation, for example, the user 560-70 may use the set-top box to tune into a link and receive the content based on the user profile, which may be stored in the set-top box and/or at other network nodes, such as, individually, at the filtering hubs 530-35 and/or, collectively, at the subscription information storage 525.

According to one embodiment, a receiver 540-50 may be interfaced to receive a content containing signal, a decoder to decode the signal, a memory to store the content, and a processor to execute instructions, such as instructions to determine that the content has been received. For example, without limitation, the receiver 540-50, the decoder, the memory, the processor, and/or the instructions may be included in a computer system, a personal computer, a digital television having a memory and a processor, a set-top box, a personal video recorder, a sound system having a memory and a processor, or other systems. The receiving system may comprise an antenna (e.g., rabbit ears, satellite dish, etc.). The receiving system may have different levels of intelligence, as desired, such as intelligence to know how to connect and receive the content (e.g., tune to a particular channel to receive a corresponding predetermined broadcast transmission) and to have the intelligence to receive and use a schedule of broadcast (e.g., to use a conceptual TV guide of sorts).

According to one embodiment, the receivers 540-50 may also function as caching devices to cache the content, subscription information, user profiles comprising the subscription information, or any other information. Further, the receivers 540-50 may work as filtering devices in addition to the filtering hubs 530-35. In other words, the receivers 540-50 may perform the filtering function of the filtering hubs 530-35, even when the receivers 540-50 and the filtering hubs 530-35 are separate, both logically and

physically. According to one embodiment, any of the network nodes may perform the filtering function, perhaps, at a different level within the network 500, from the filtering function performed by the filtering hubs 530-35. Furthermore, the receivers 540-50 and filtering hubs 530-35 may be physically and/or logically, partially or fully, integrated or  
5 segregated.

According to one embodiment, the filtering hubs 530-35 may function as caching, filtering, and forwarding devices. For example, in case of a cable provider functioning as a content distributor 505, a head-end may serve as a filtering hub 530-535. The filtering hubs 530-35 may filter/prune and/or divide the collective content bit stream received from  
10 the content distributor 505 into personalized content bit streams based on the user profiles comprising the individual subscription information received from the users 560-70. The filtering hubs 530-35 may then forward the personalized content bit streams to the corresponding users 560-70 via the corresponding receivers 540-50. Based on the subscription information received from the users 560-70, the filtering hubs 530-35 may  
15 generate individual user profiles corresponding to each user 560-70, and may cache such information for future use. When generating personalized content streams, the filtering hubs 530-35 may maximize the available bandwidth by appropriating bandwidth according to the user profiles.

Typically, a user profile may comprise subscription information as provided by the  
20 user 560-70. A user profile may correspond to a single user 560-70, a family profile may correspond to a family of users including the user 560-70, a device profile may correspond to a device associated with the user 560-70, a business profile may correspond to a business or business group that includes the user 560-70, a demographic profile may correspond to a demographic segment (e.g., the elderly, a particular race, a particular  
25 religion) that includes the user 560-70, or a geographic profile corresponding to a geographic location (e.g., downtown area, Portland) associated with the user 560-70. Thus, the profile may be a singular user profile or a community user profile. Further, other types of profiles are contemplated.

According to one embodiment, a user profile may include user information (e.g.,  
30 characteristics and attributes of the user 560-70, billing information, address information), content preference data that indicates types of content preferred by the user 560-70 (e.g., sports), characteristics of content (e.g., major sporting event) that the user 560-70 prefers, content rating that indicates the user's 560-70 interest-level regarding certain content,

5 timing preference information that indicates when the user prefers to receive or consume the content, observational profile information based on automated observation and profile recordation of content consumption behavior of the user 560-70 and/or direct contribution of profile data by the user 560-70, and any other information that describes when and how the user prefers to receive the content. According to one embodiment, the profile may contain information or data operable to differentiate or identify desired or preferred content from undesired or un-preferred content.

10 According to one embodiment, as mentioned above, the profile may include not only user preferences, but also content rating. In other words, the users 560-70 may enter information indicating their interest-level regarding the content using a content rating system, which may be predetermined. The content rating system may be implemented in a number of ways, and should be interpreted broadly. For example, a number of stars (such as one through four), numbers (such as 1 through 10), letters (such as A through J), symbols (such as bulls, bears, thumbs up and down), or words (such as excellent, poor) 15 may be used, or any combination of such may be used, to rate the content. For example, the user 575 may rate action movies at 3 stars out of four stars, but rate action movies with Jackie Chen 3 1/2 stars out of 4 stars. Such information may then be used by the corresponding filtering hub 530-35 and/or the receivers 540-550 to populate the user profiles, and provide the personalized content stream.

20 According to one embodiment, conventional technologies may be used, together with any desirable modifications that will be apparent to those skilled in the art. For example, the network 500 may comprise a conventional processor to execute instructions, a conventional memory to store content, a conventional encoder to encode content, a conventional transmitter to transmit a content containing signal, a conventional receiver to receive the content containing signal, and a conventional decoder to decode content. 25 Without limitation, the content may be converted to an MPEG format, transmitted via a tower antenna over an atmospheric communication medium, received by an antenna, and converted from the MPEG format to an uncompressed useable format.

30 According to one embodiment, the network 500 may comprise a content delivery/transmission system (delivery system) to deliver the content, and a content receiving/reception system (receiving system) to receive the content. The term "transmission" and "delivery" and related terms may be used broadly to refer to moving data, frequently digital data, from one place or system to another and the term "reception"

and "receiving" and related terms may be used broadly to refer to accepting the moved data. Typically, delivery may include generating and submitting a content-containing machine-accessible signal, and receiving may include accepting and interpreting the content-containing machine-accessible signal. For example, a transmission tower may  
5 broadcast an electromagnetic radiation content-containing signal simultaneously to multiple receiving antennas (e.g., rabbit ear antennas) operable to accept the signal. Alternatively, rather than broadcasting, the signal may be multicast or narrowcast to specific recipients, similarly to the way cable television is delivered to cable subscribers.

According to one embodiment, the delivery system may deliver the content over a  
10 substantially one-way communication link, in which the predominant or only delivery is from the delivery system to the receiving system. According to one embodiment, the link may be bi-directional, although typically, the link will be a substantially non-client-server link. A client-server link would be typified by the receiving system issuing a request for the content, and the delivery system then issuing the content in response, similarly to the  
15 way that a web page may be received using the Internet. In contrast, in a non-client-server link, the delivery system may provide the content without the request. That is, the delivery system may deliver the content to the receiving system, and typically a plurality of other receiving systems simultaneously, without receiving a specific request that is processed and responded to or supplied.

According to one embodiment, the link may be a link that is shared by multiple  
20 receiving systems such as the described receiving system. The link may be based on a number of technologies, including satellite and dish, fiber optic, coaxial cable, and others. For example, the link may be a one way broadcast pipe in which the content is simultaneously broadcast to all of the receivers 560-70 connected with a network (e.g.,  
25 having an antenna like rabbit ears or a satellite dish to receive the transmission) or narrowcast to a select group of receivers (e.g., having authorization to receive the transmission). For example, the link may carry a digital TV channel with a bandwidth of 19.39 megabits per second and may be partitioned among multiple channels such as four channels that each carry 4.85 megabits per second, which may carry either content or re-  
30 transmitted/re-delivered content.

Figure 6 is a flow diagram conceptually illustrating content delivery processing, according to one embodiment of the present invention. First, a content distributor having access to a metadata dictionary may prepare and provide an updated metadata dictionary



to all the network nodes in the network in processing block 605. This may keep the network nodes updated on what metadata vocabulary to use in order to describe the subscription information received from the users. The users may provide subscription information by accessing the corresponding receivers in processing block 610. The receivers may provide the subscription information to the corresponding filtering hubs in processing block 615. The filtering hubs may aggregate the subscription information, and generate individual user profiles based on the subscription information in processing block 620. The filtering hubs may then associate content descriptors to the user profiles in processing block 625, and cache the user profiles for future comparison and filtering of the content. The filtering hubs may transmit the subscription information upstream along the network nodes to the content distributor in processing block 630.

The content distributor may aggregate the individual subscription information received from various network nodes, such as downstream filtering hubs 530-535 and/or receivers 540-550, to prepare a collective subscription, which is stored for future references in regards to content delivery in processing block 635. The content preparation module may then generate an aggregated content bit stream based on the collective subscription information in processing block 640. According to one embodiment, the content distributor may receive the content from one or more content sources. The content distributor may also simply access the master copy of the content stored in the content storage. Further, according to one embodiment, the content distributor may comprise the content preparation module for aggregating the content and preparing the aggregated content bit stream. The content distributor may then forward the aggregated content stream along to the next tier of network nodes, including to the filtering hubs, in processing block 645. After receiving the aggregated content stream, the filtering hubs may generate personalized content streams corresponding to the individual users by filtering and pruning the aggregated content stream according to the comparison of the aggregated content stream based on the collected subscription information with the individual user profiles based on the individual subscription information in processing block 650. The filtering hubs may provide the personalized content streams to the corresponding users via receivers associated with the users in processing block 655.

Figure 7 is a block diagram conceptually illustrating a cable television network using content-based scheme for content delivery, according to one embodiment of the present invention. As illustrated, a cable operator/provider 705, such as AT&T or

Comcast Cable, may be a content distributor 705. The cable operator/provider 705 having access to metadata dictionary may provide the metadata vocabulary or content descriptors to the entire network for consistency and uniformity in using the metadata vocabulary. Further, the content descriptors are used for enabling a content-based caching and forwarding content delivery system as opposed to an address-based content delivery system. Head-ends 710-715 are illustrated as filtering hubs 710-715, and televisions (or television set-top boxes), as illustrated, may function as receivers 720-730.

According to one embodiment, the users 735-45 may provide individual subscription information 750-760 using their televisions or television set-top boxes 720-30. The receivers 720-30 may provide the individual subscription information 750-60 received from each of the users 735-45 to the corresponding head-ends 720-30. For example, user 1 735 may request the categories of sports and music 750, specifically, basketball and jazz. User 2 740 may request only music 735 (jazz and country), while user 3 745 may request movies 760 starring Kevin Costner. The receivers 720-730 may generate individual user profiles for each of the users 735-745, and save the user profiles for future use. However, the receivers 720-730 may also forward the subscription information 750-760 to the head-ends 710-715.

Head-end A 710 receives the subscription information 765 from receiver 1 and 2 720-725, while head-end B 715 receives subscription information 770 from receiver 3 730. According to one embodiment, the head-ends 720-730 may also generate individual user profiles for future use. The head-ends 720-730 may generate aggregated subscription information 775 based on the individual subscription information 765-770 received from the receivers 720-730. The aggregated subscription information 775 may be forwarded to the content distributor 705 for generating content bit stream based on the aggregated subscription information 775. The head-ends 710-715 may also save the subscription information 775 for future use in regards to future content delivery. Further, the head-ends 710-15 may associate content descriptors with the subscription information 775 based on the metadata dictionary forwarded by the content distributor 705.

According to one embodiment, the content distributor 705 may use the aggregated subscription information 775 to determine the users' 735-45 preferences, needs, and interest-levels regarding the content on a collective basis. The cable operator/provider 705 may also associate content descriptors to the aggregated subscription information 775, or may simply translate the content descriptors already assigned by the head-ends 710-715.

Once the users' 735-45 preferences, needs, and interest-levels are determined, the content distributor 705 may accordingly distribute an aggregated content bit stream for maximizing the bandwidth use. For example, the content distributor 705 may allocate 50% of the bandwidth to music, and 25% of the bandwidth each to sports and movies.

- 5 The content distributor 705 may further breakdown the bandwidth within a category. For example, 67% of the bandwidth assigned to music may be further assigned to jazz, and 33% may be assigned to country.

According to one embodiment, by using the content-based content delivery system, the network 700 may optimize its resources, by at least maximizing its bandwidth.

- 10 Further, due to the content-based scheme, the content delivery system is dynamic in nature, and is therefore, easily generated and allows for easy tracking of content pieces before, during, and after the distribution. The individual user subscription information may be used to time-shift some of the content to specific segments of the network for further optimization of bandwidth and broadcasting schedule. For example, according to  
15 one embodiment, the time-shifting of the content may be performed by generating time-slots according to the subscription information, and therefore, by avoiding the simultaneous broadcast of all the content to all the users.

The aggregated content bit stream may then be distributed by the content distributor 705 to the network 700 based on the aggregated subscription information 775.

- 20 The head-ends 710-715 may filter, prune, and divide the aggregated content bit stream into several personalized content bit streams by comparing the aggregated content bit stream to the individual user profiles generated by the receivers 720-730. The personalized bit streams may then be transmitted to the users 735-745 via the corresponding televisions  
25 720-730.

## CLAIMS

What is claimed is:

1. A method comprising:

receiving content from one or more content sources;

5 distributing metadata dictionary to a plurality of network nodes, wherein the  
metadata dictionary comprises content descriptors;

receiving a plurality of subscription information from a plurality of corresponding  
filtering network nodes of the plurality of network nodes, wherein the  
plurality of subscription information is provided by a plurality of

10 corresponding users via a plurality of receiving network nodes of the  
plurality of network nodes;

aggregating the plurality of subscription information;

generating an aggregated content stream based on the aggregated subscription  
information, wherein the aggregated content stream comprises aggregated  
15 content; and

distributing the aggregated content stream to the plurality of filtering network  
nodes.

2. The method of claim 1, further comprising:

generating a plurality of user profiles comprising the plurality of subscription  
20 information;

associating the content descriptors with the plurality of user profiles;

saving the user profiles;

generating a plurality of personalized content streams based on the plurality of user  
profiles by dividing the aggregated content stream into the plurality of  
25 personalized content streams; and

providing the plurality of personalized content streams to the plurality of receiving network nodes.

3. The method of claim 2, wherein the generating the plurality of personalized content streams comprises filtering the aggregated content stream by comparing the aggregated content stream with the plurality of user profiles.
4. The method of claim 1, wherein the preparing the aggregated content stream based on the aggregated subscription information further comprises allocating bandwidth based on the aggregated subscription information to maximize the bandwidth.
5. The method of claim 1, further comprising providing the plurality of personalized content streams to the plurality of corresponding users.
6. A method comprising:
  - receiving a plurality of subscription information from a plurality of receiving network nodes of a plurality of network nodes;
  - generating a plurality of user profiles comprising the plurality of subscription information;
  - associating content descriptors with the plurality of user profiles;
  - saving the user profiles;
  - generating a plurality of personalized content streams based on the plurality of user profiles by dividing an aggregated content stream into the plurality of personalized content streams; and
  - providing the plurality of personalized content streams to the plurality of receiving network nodes.
7. The method of claim 6, further comprising:
  - receiving the plurality of subscription information from the plurality of corresponding users;

forwarding the plurality of subscription information upstream to a plurality of  
filtering network nodes of the plurality of network nodes;  
receiving the plurality of personalized content streams from the plurality of  
filtering network nodes; and  
5 providing the plurality of personalized content streams to the plurality of  
corresponding users, wherein the plurality of personalized content streams  
comprises content.

8. The method of claim 7, further comprising:  
generating the plurality of user profiles based on the plurality of subscription  
10 information;  
saving the plurality of user profiles.
9. The method of claim 7, further comprising displaying the content.
10. The method of claim 6, wherein the plurality of subscription information  
comprises a plurality of user preference data, wherein the plurality of user  
15 preference data comprises content preferred by the plurality of users.
11. The method of claim 6, wherein the subscription information comprises a plurality  
of content rating data, wherein the plurality of content rating data indicates  
interest-level of the plurality of the users relating to the content.
12. The method of claim 6, wherein the plurality of users comprises the following: a  
20 household and a community.
13. The method of claim 12, wherein the community comprises the plurality of users  
based on the following: demographics, geographic locations, and head-ends.
14. The method of claim 6, further comprising:  
distributing a metadata dictionary comprising the content descriptors;  
25 dynamically updating the metadata dictionary; and

storing the metadata dictionary.

15. The method of claim 6, further comprising:

receiving the content from a plurality of content sources, wherein the content  
sources comprise sources of web content, re-purposed web content,  
5 produced content, and external content; and  
storing the content.

16. A content delivery system comprising:

a content distributor to distribute downstream an aggregated content stream to a  
plurality of filtering hubs of a network, wherein the aggregated content  
10 stream is based on an aggregation a plurality of subscription information  
received from the plurality of filtering hubs;

the plurality of filtering hubs to receive the plurality of subscription information  
from a plurality of receivers of the network, and filter the aggregated  
content stream to generate a plurality of personalized content streams based  
15 on a plurality of user profiles, wherein the plurality of user profiles is  
generated based on the plurality of subscription information, and provide  
the plurality of personalized content streams downstream to the plurality of  
receivers; and

a plurality of receivers to receive the subscription information from a plurality of  
20 users, and provide the subscription information upstream to the plurality of  
the filtering hubs, and provide the plurality of personalized content streams  
downstream to the plurality of users.

17. The content delivery system of claim 16, wherein the content distributor is further  
to distribute a metadata dictionary to a plurality of nodes of the network, wherein  
25 the metadata dictionary comprises metadata vocabulary.

18. The content delivery system of claim 16, wherein the content distributor is further to receive content from one or more content sources.
19. The content delivery system of claim 16, wherein the content distributor comprises broadcasting networks, local broadcasters, cable providers and operators, satellite  
5 service provider, and other content providers.
20. The content delivery system of claim 16, wherein the plurality of filtering hubs comprises head-ends, local broadcasters, local satellite stations, and filtering stations.
21. The content delivery system of claim 16, wherein the plurality of receivers  
10 comprises multimedia devices, wherein the multimedia devices comprise content providing sub-system and content receiving sub-system.
22. The content delivery system of claim 21, wherein the content providing sub-system comprises content display system.
23. The content delivery system of claim 16, wherein the plurality of filtering hubs and  
15 the plurality of receivers may be logically and/or physically integrated.
24. A machine-readable medium having stored thereon data representing sequences of instructions, the sequences of instructions which, when executed by a processor, cause the processor to:
- 20 receive content from one or more content sources;
- distribute metadata dictionary to a plurality of network nodes, wherein the  
metadata dictionary comprises content descriptors;
- receive a plurality of subscription information from a plurality of corresponding  
filtering network nodes of the plurality of network nodes, wherein the  
plurality of subscription information is provided by a plurality of



corresponding users via a plurality of receiving network nodes of the plurality of network nodes;

aggregate the plurality of subscription information;

generate an aggregated content stream based on the aggregated subscription

5 information, wherein the aggregated content stream comprises aggregated content; and

distribute the aggregated content stream to the plurality of filtering network nodes.

25. The machine-readable medium of claim 24, wherein the sequences of instructions which, when executed by a processor, further cause the processor to:

10 generate a plurality of user profiles comprising the plurality of subscription information;

associate the content descriptors with the plurality of user profiles;

save the user profiles;

generate a plurality of personalized content streams based on the plurality of user

15 profiles by dividing the aggregated content stream into the plurality of personalized content streams; and

provide the plurality of personalized content streams to the plurality of receiving network nodes.

26. The machine-readable medium of claim 25, wherein to generate the plurality of

20 personalized content streams further cause the processor to filter the aggregated content stream by comparing the aggregated content stream with the plurality of user profiles

27. A machine-readable medium of claim 24, wherein the sequences of instructions which, when executed by a processor, further cause the processor to provide the

25 plurality of personalized content streams to the plurality of corresponding users.

28. A machine-readable medium having stored thereon data representing sequences of instructions, the sequences of instructions which, when executed by a processor, cause the processor to:
- receive a plurality of subscription information from a plurality of receiving
- 5 network nodes of a plurality of network nodes;
- generate a plurality of user profiles comprising the plurality of subscription information;
- associate content descriptors with the plurality of user profiles;
- save the user profiles;
- 10 generate a plurality of personalized content streams based on the plurality of user profiles by dividing an aggregated content stream into the plurality of personalized content streams; and
- provide the plurality of personalized content streams to the plurality of receiving network nodes.
- 15 29. The machine-readable medium of claim 28, wherein the sequences of instructions which, when executed by a processor, further cause the processor to:
- receive the plurality of subscription information from the plurality of
- corresponding users;
- forward the plurality of subscription information upstream to a plurality of filtering
- 20 network nodes of the plurality of network nodes;
- receive the plurality of personalized content streams from the plurality of filtering network nodes; and
- provide the plurality of personalized content streams to the plurality of
- corresponding users, wherein the plurality of personalized content streams
- 25 comprises content.

30. The machine-readable medium of claim 28, wherein the sequences of instructions which, when executed by a processor, further cause the processor to:  
generate the plurality of user profiles based on the plurality of subscription  
information;  
5 save the plurality of user profiles.

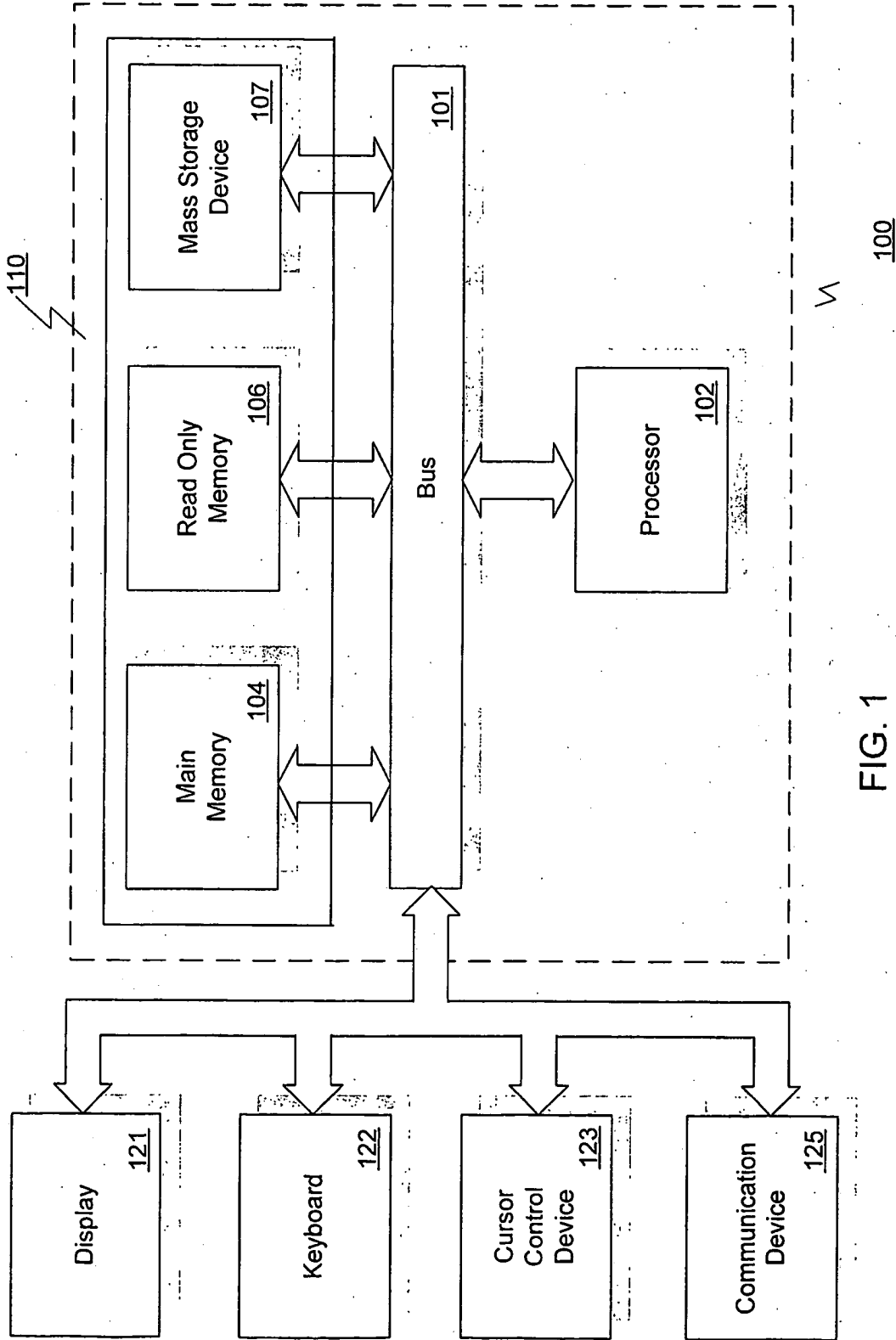


FIG. 1

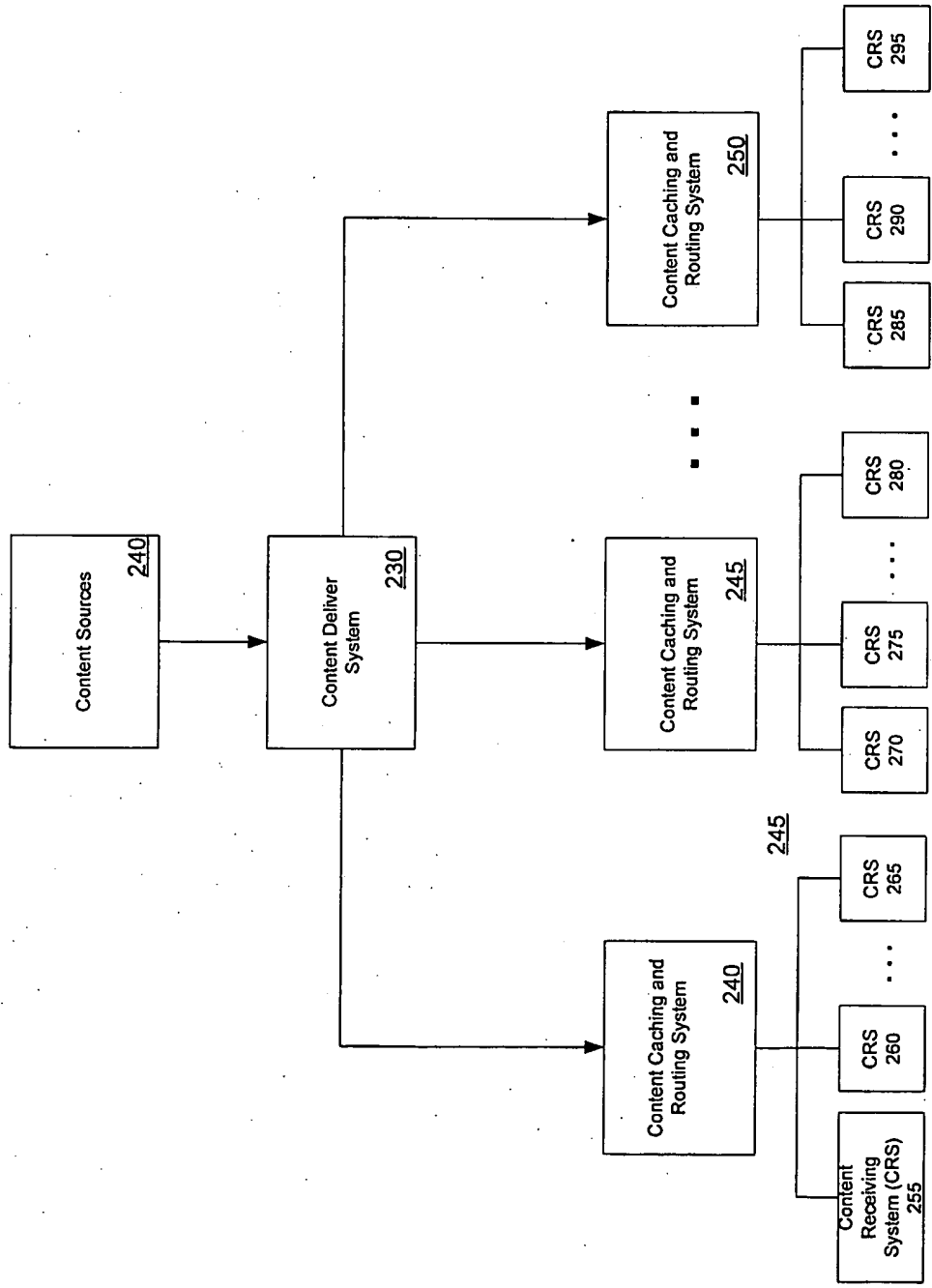
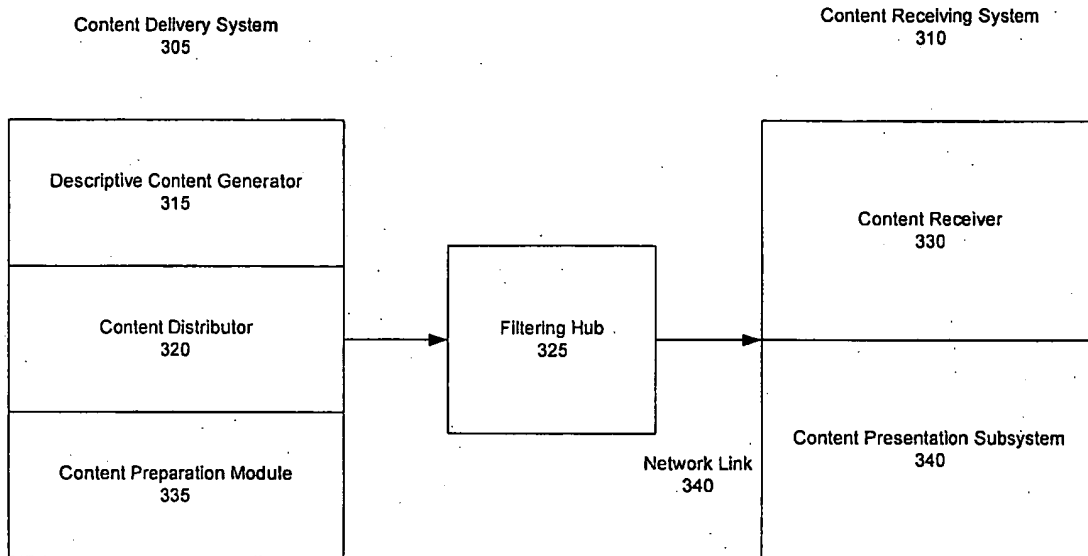


FIG. 2

Network 200



300

FIG. 3

4/7

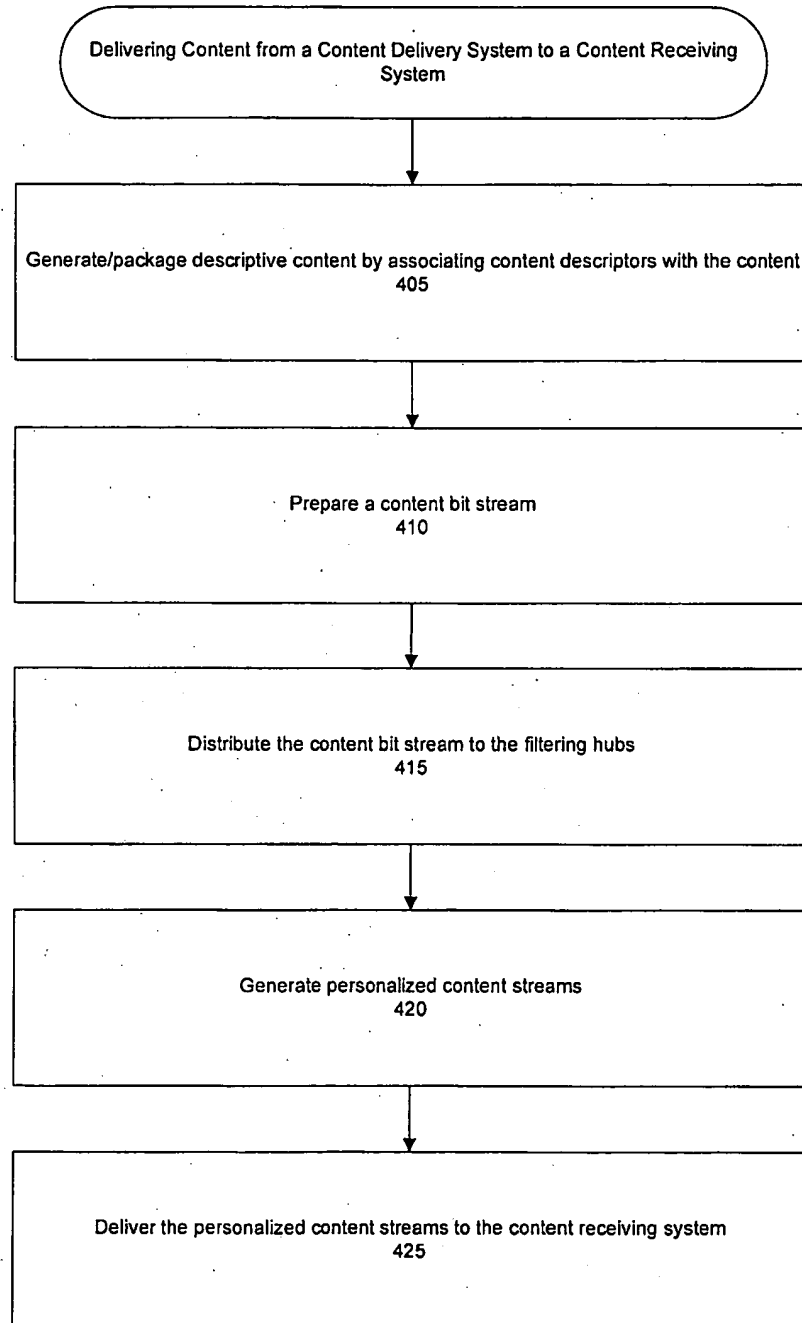


FIG. 4

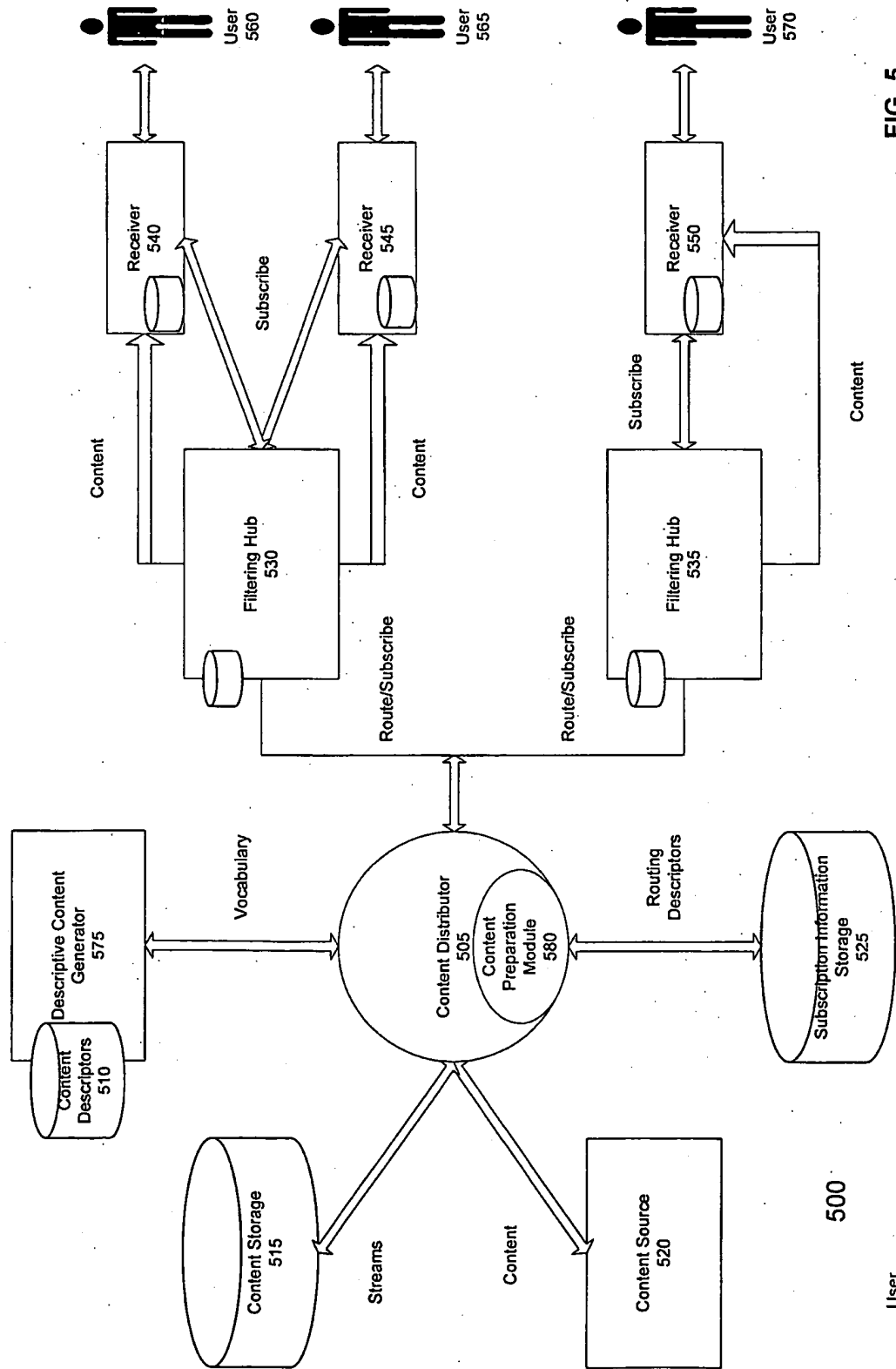


FIG. 5

User 565



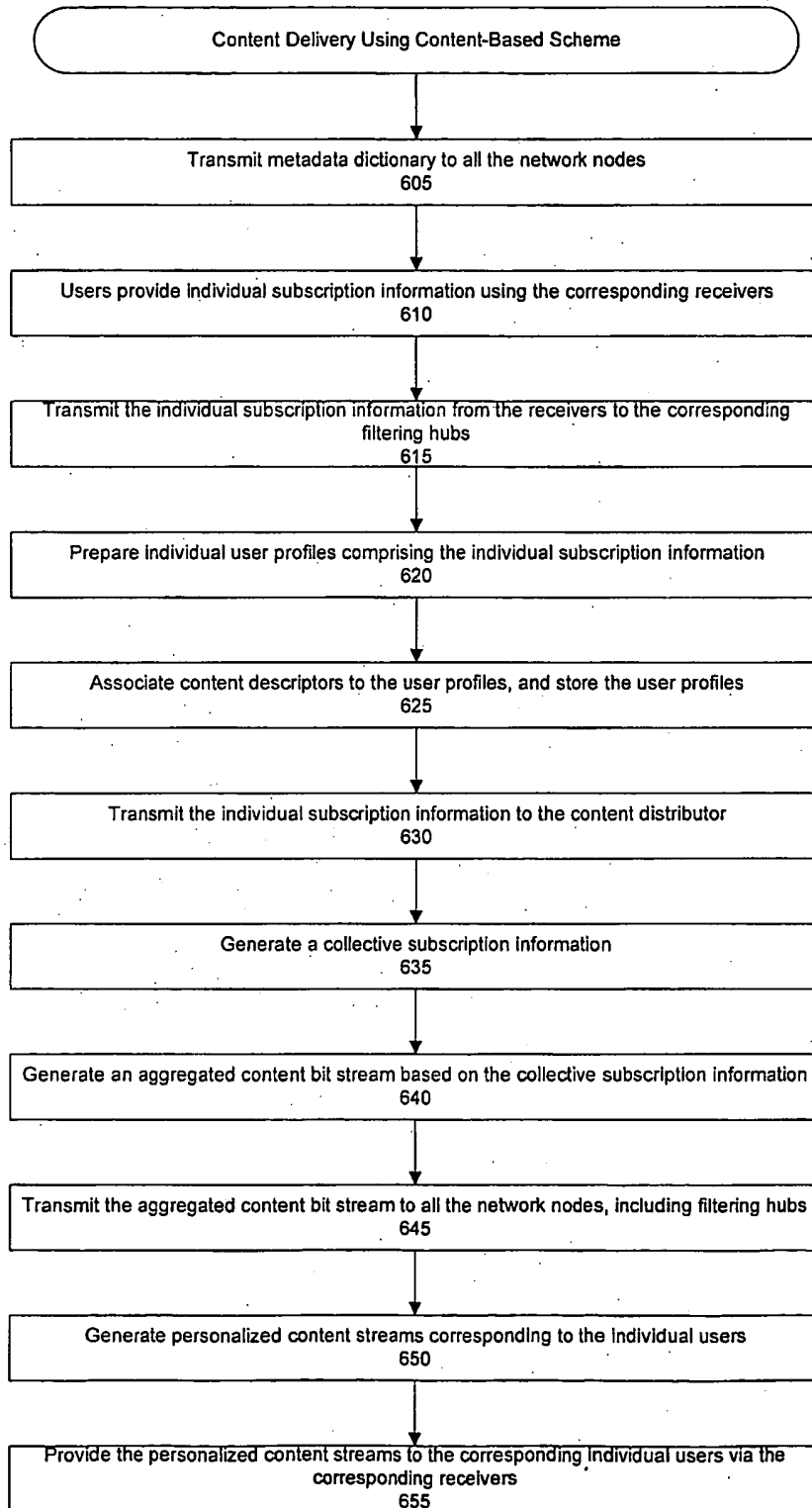
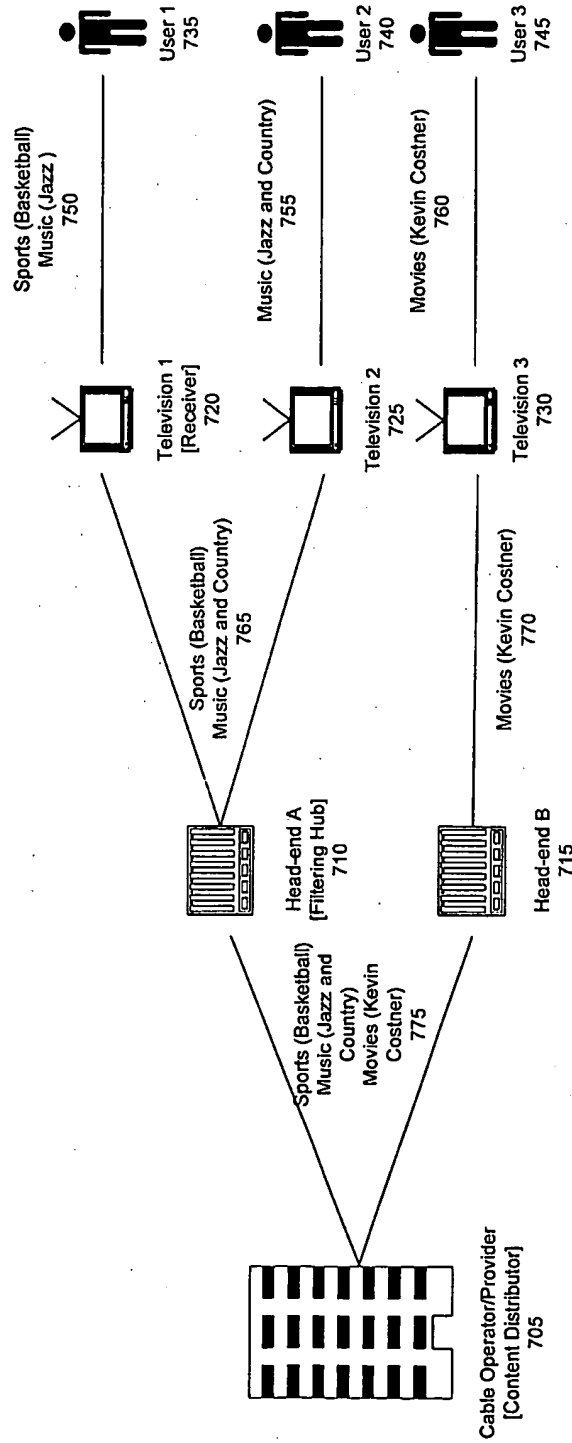


FIG. 6



700

FIG. 7

INTERNATIONAL SEARCH REPORT

International Application No  
PCT/US 03/00169

<b>A. CLASSIFICATION OF SUBJECT MATTER</b> IPC 7 H04L29/06 G06F17/60		
According to International Patent Classification (IPC) or to both national classification and IPC		
<b>B. FIELDS SEARCHED</b> Minimum documentation searched (classification system followed by classification symbols) IPC 7 H04L G06F		
Documentation searched other than minimum documentation to the extent that such documents are included in the fields searched		
Electronic data base consulted during the International search (name of data base and, where practical, search terms used) EPO-Internal, PAJ, WPI Data		
<b>C. DOCUMENTS CONSIDERED TO BE RELEVANT</b>		
Category *	Citation of document, with indication, where appropriate, of the relevant passages	Relevant to claim No.
X	US 2001/003828 A1 (ELLERMAN ERIK CASTEDO ET AL) 14 June 2001 (2001-06-14) abstract figures 1,7-9 page 2, paragraphs 16-18,20,22,25 page 3, paragraphs 27,29,42,43,45 page 5, paragraph 75 page 6, paragraphs 84-87 ---	1-10,16, 24-30
X	EP 1 089 201 A (ACTV INC) 4 April 2001 (2001-04-04) abstract claims 1-4 ---	1-10,16, 24-30
A	WO 99 44159 A (ENGAGE TECHNOLOGIES) 2 September 1999 (1999-09-02) the whole document ---	1-30
-/--		
<input checked="" type="checkbox"/> Further documents are listed in the continuation of box C.		<input checked="" type="checkbox"/> Patent family members are listed in annex.
* Special categories of cited documents :		
*A* document defining the general state of the art which is not considered to be of particular relevance *E* earlier document but published on or after the International filing date *L* document which may throw doubts on priority claim(s) or which is cited to establish the publication date of another citation or other special reason (as specified) *O* document referring to an oral disclosure, use, exhibition or other means *P* document published prior to the International filing date but later than the priority date claimed		
*T* later document published after the International filing date or priority date and not in conflict with the application but cited to understand the principle or theory underlying the invention *X* document of particular relevance; the claimed invention cannot be considered novel or cannot be considered to involve an inventive step when the document is taken alone *Y* document of particular relevance; the claimed invention cannot be considered to involve an inventive step when the document is combined with one or more other such documents, such combination being obvious to a person skilled in the art. *&* document member of the same patent family		
Date of the actual completion of the International search  <p style="text-align: center;">22 May 2003</p>		Date of mailing of the International search report  <p style="text-align: center;">02/06/2003</p>
Name and mailing address of the ISA European Patent Office, P.B. 5818 Patentlaan 2 NL - 2280 HV Rijswijk Tel. (+31-70) 340-2040, Tx. 31 651 epo nl, Fax: (+31-70) 340-3016		Authorized officer  <p style="text-align: center;">Pereira, M</p>

## INTERNATIONAL SEARCH REPORT

International Application No  
PCT/US 03/00169

C.(Continuation) DOCUMENTS CONSIDERED TO BE RELEVANT		
Category *	Citation of document, with indication, where appropriate, of the relevant passages	Relevant to claim No.
A	WO 01 93524 A (BORGER DANA ; COX STEVE (US); GUAN XIAOHU (US); SPITZ DAVID (US); G) 6 December 2001 (2001-12-06) the whole document ---	1-30
A	US 2001/012299 A1 (DAHLEN ROBERT L) 9 August 2001 (2001-08-09) the whole document ---	1-30
A	WO 97 26729 A (ROBINSON GARY B) 24 July 1997 (1997-07-24) the whole document -----	1-30

## INTERNATIONAL SEARCH REPORT

Information on patent family members

International Application No

PCT/US 03/00169

Patent document cited in search report		Publication date	Patent family member(s)	Publication date
US 2001003828	A1	14-06-2001	NONE	
EP 1089201	A	04-04-2001	AU 6123800 A	05-04-2001
			AU 7738200 A	30-04-2001
			BR 0014376 A	19-11-2002
			CA 2345072 A1	05-04-2001
			CN 1291050 A	11-04-2001
			CN 1379881 T	13-11-2002
			EP 1089564 A1	04-04-2001
			EP 1089201 A1	04-04-2001
			GB 2359447 A ,B	22-08-2001
			GB 2359449 A ,B	22-08-2001
			JP 2001175688 A	29-06-2001
			JP 2003510930 T	18-03-2003
			WO 0124027 A1	05-04-2001
WO 9944159	A	02-09-1999	AU 2879399 A	15-09-1999
			CA 2322026 A1	02-09-1999
			EP 1057125 A1	06-12-2000
			WO 9944159 A1	02-09-1999
			US 2002199004 A1	26-12-2002
			US 6415322 B1	02-07-2002
WO 0193524	A	06-12-2001	AU 6333601 A	11-12-2001
			WO 0193524 A2	06-12-2001
			US 2002004855 A1	10-01-2002
US 2001012299	A1	09-08-2001	AU 2485000 A	24-07-2000
			WO 0041359 A1	13-07-2000
WO 9726729	A	24-07-1997	AU 1566597 A	11-08-1997
			WO 9726729 A2	24-07-1997
			US 5918014 A	29-06-1999

**This Page is Inserted by IFW Indexing and Scanning  
Operations and is not part of the Official Record**

**BEST AVAILABLE IMAGES**

Defective images within this document are accurate representations of the original documents submitted by the applicant.

Defects in the images include but are not limited to the items checked:

- BLACK BORDERS
- IMAGE CUT OFF AT TOP, BOTTOM OR SIDES
- FADED TEXT OR DRAWING
- BLURRED OR ILLEGIBLE TEXT OR DRAWING
- SKEWED/SLANTED IMAGES
- COLOR OR BLACK AND WHITE PHOTOGRAPHS
- GRAY SCALE DOCUMENTS
- LINES OR MARKS ON ORIGINAL DOCUMENT
- REFERENCE(S) OR EXHIBIT(S) SUBMITTED ARE POOR QUALITY
- OTHER: \_\_\_\_\_

**IMAGES ARE BEST AVAILABLE COPY.**

**As rescanning these documents will not correct the image problems checked, please do not report these problems to the IFW Image Problem Mailbox.**